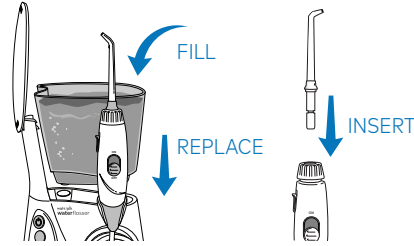


Quick Start Guide

PRIMING UNIT (FIRST TIME USE ONLY)

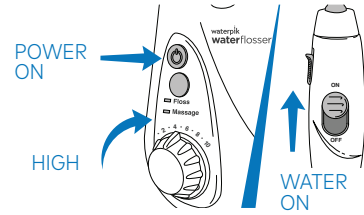
1

Fill reservoir with warm water and replace it firmly on the base. Insert tip firmly until it clicks into place.



2

Turn pressure to high, point tip into sink, turn power ON and water switch to ON until water flows. Turn power and water OFF.



NEED HELP?

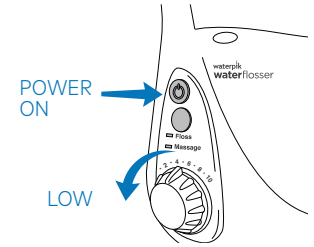
Visit [Waterpik.com/WelcomeWF](https://www.waterpik.com/WelcomeWF)
To watch a How To Video and find additional product support.

Call Us! 1-800-525-2774

WATER FLOSS

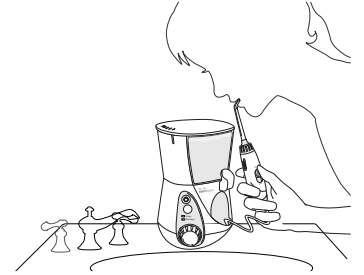
3

With power OFF and water switch in OFF position, place tip in mouth. Turn power ON. Turn water switch to ON.



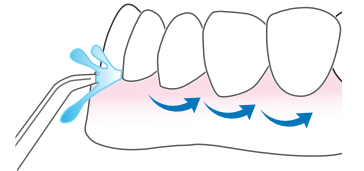
4

Lean over sink. Close lips enough to prevent splashing, while still allowing water to flow from mouth into sink.



5

Aim water at the gumline at a 90 degree angle. Follow the gumline and pause briefly between teeth.



**TO AVOID MESS: PLACE TIP
IN YOUR MOUTH BEFORE
TURNING WATER ON.**