

Chairside Guide Waterpik™ Water Flosser for Implant Maintenance

Single Implant



Multiple Implants



Denture Retained with Implants



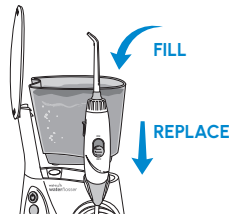
Taking care of your implant is important for maintaining optimal function and longevity.

QUICK START GUIDE

PRIMING UNIT (FIRST TIME USE ONLY)

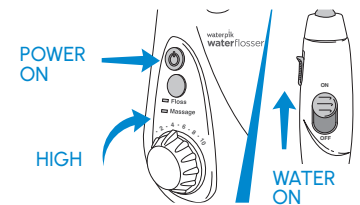
1

- Fill reservoir with warm water and replace it firmly on the base.
- Insert tip firmly until it clicks into place.



2

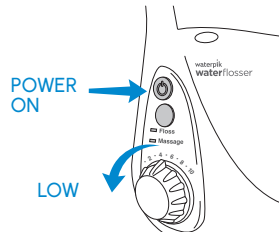
- Turn pressure to high
- Point tip into sink
- Turn power and water switch to ON until water flows into sink.
- Turn power and water OFF



WATER FLOSS

3

- With power and water switch in OFF position, place tip in mouth.
- Turn power ON.
- Turn water switch to ON.



4

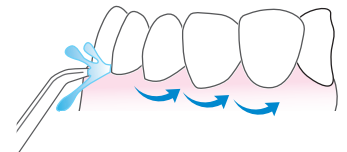
- Lean over sink.
- Close lips enough to prevent splashing and allow some water to flow from mouth into the sink.

HELPFUL TIP: PLACE TIP IN YOUR MOUTH BEFORE TURNING WATER ON.



5

- Aim water at the gumline at 90 degree angle
- Follow the gumline and pause briefly between teeth



BEST TIPS TO USE FOR IMPLANTS

PLAQUE SEEKER™ TIP

Works also on implants, bridges, retainers and general use. Removes bacteria and debris from hard to reach areas around dental restorations.



CLASSIC JET TIP

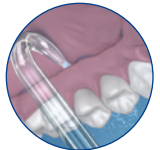
The Easy and Most Effective Way to Floss!*

*compared to string floss and other manual interdental brushes and picks



FULL ARCH IMPLANT TIP

Specially designed to reach underneath and around implant retained dentures to remove bacteria and debris.



WATERPIK™ OPTIONS

ION



The ION Professional Cordless Water Flosser provides maximum performance with cordless convenience. The rechargeable cordless design eliminates clutter, and with a 30% smaller size than traditional plug-in models, ION is exceptionally compact.

AQUARIUS™



The advanced design of this compact professional model includes pulse-modulation technology for maximum plaque removal (Floss Mode) and enhanced gum stimulation for improved circulation (Hydro-Pulse Massage Mode).

CORDLESS ADVANCED



The Cordless Advanced features a magnetic 4-hour rapid charging system, ultra quiet operation, waterproof design, and global voltage. It's perfect for small spaces, travel, and use in the shower. Available in several designer colors.

Chairside Guide

Implant Success is a Team Effort!

waterpik™

1 Discuss Medical History



3 Personal Self-Care Regimen

Tooth Brushing - Twice a Day!



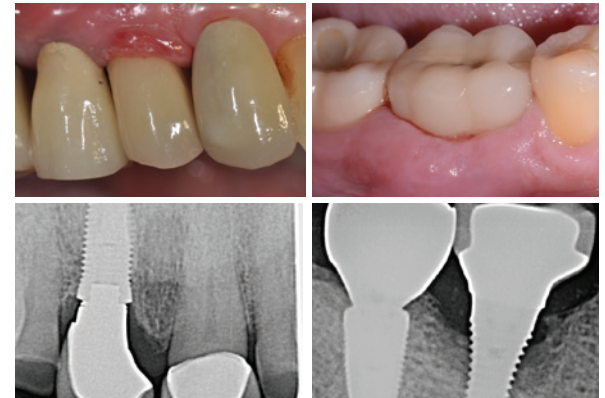
**Water Flossing
One Minute a Day
Helps to Keep the
Bacteria Away**

4 Prevent Problems

Peri-implant Mucositis Inflammation
of gum tissue around implant



Peri-implantitis Inflammation + bone
loss around implant



2 Periodic Assessment & Evaluation

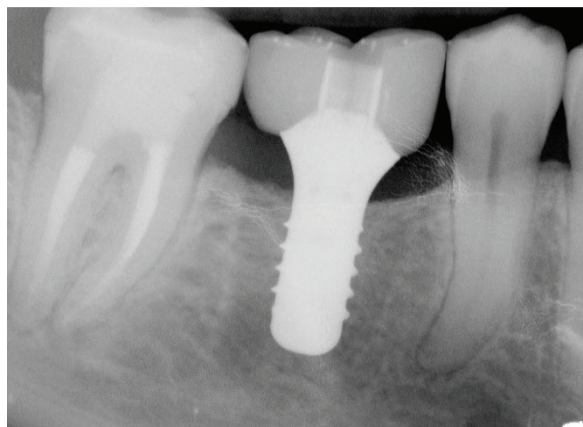


Clinical examination of implants, teeth
and all structures of the mouth



Comprehensive
periodontal exam
including probing
to measure depth
of pocket and
appearance of
gum tissue.

Radiographs monitor the bone level



5 Risk Factors

Things that can
impact implant
success

- Diet
- Oral Hygiene
- Smoking
- Diabetes

