

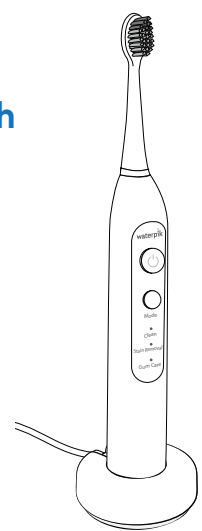
# Waterpik® Sensonic™ Toothbrush

## STW Series

### LET US HELP YOU GET STARTED!



We have many helpful tools to provide you with the best possible experience. Scan the QR code or visit: [waterpik.com/sensonic](http://waterpik.com/sensonic).

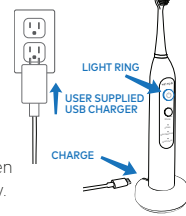


QUICK START GUIDE INSIDE →

## Quick Start Guide

### GETTING STARTED

- 1 Charge for 4 hours before first use. Light ring will flash on handle while charging. When fully charged all lights will shut off. Light ring will glow red when battery is running low.

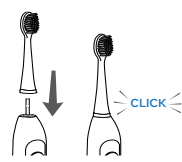


USB Charging Cable  
20030405-2 White



Charging Base  
20031405-1 White

- 2 Slide brush head onto handle and push it down firmly.



- 3 Place brush head into your mouth before turning unit on.

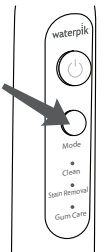
- 4 After turning the power ON, select mode by pressing mode button.

#### Modes

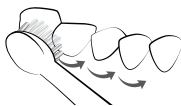
**Clean:** Outstanding everyday cleaning performance

**Stain Removal:** Gently removes surface stains

**Gum Care:** Gently enhances gum stimulation

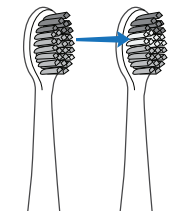


- 5 For best results, position brush along gumline at a 45 degree angle. Use light pressure with a slow back and forth motion covering one or two teeth at a time.



- 6 Bristles change from green to yellow when time to replace.

(For optimal performance replace brush heads every 3 months.)



#### Replacement Brush Heads:

##### Sensonic™ Brush Head

Replace every 3 months

Replacement Brush Heads may be purchased online at [www.waterpik.com](http://www.waterpik.com), or by phone from Water Pik, Inc. at 1-800-525-2774

Rated Input: 5.0 VCD, 1.0 A  
Rechargeable Battery: Lithium-ion

#### Have Questions or Need More Information?

- FULL INSTRUCTION MANUAL
- CLEANING
- REPLACEMENT BRUSH HEADS
- TROUBLESHOOTING
- COMMON QUESTIONS

#### Let Us Help You Get Started!

We have many helpful tools to provide you with the best possible experience. Visit: [waterpik.com/sensonic](http://waterpik.com/sensonic).



#### SERVICE MAINTENANCE

Waterpik® electric toothbrushes have no consumer serviceable electrical items and do not require routine service maintenance. For all parts and accessories go to [www.waterpik.com](http://www.waterpik.com). You may also call our toll-free customer service number at 1-800-525-2774. Refer to the serial and model numbers in all correspondence. These numbers are located on the base or handle of your toothbrush. Still have questions? Go to [www.waterpik.com](http://www.waterpik.com)

#### CLEANING

1. After each use, turn off unit, remove the brush head from the handle and rinse brush head under running water.
2. Wipe the handle dry after each use.
3. Periodically, clean the charger base, first unplugging the unit and then wiping with a damp cloth.

#### BATTERY RECYCLING

**Warning:** The battery of this product is not replaceable. Please do not disassemble the product unless you want to dispose it. **Warranty service will be void if disassembled.**

This product contains a **rechargeable lithium-ion battery** and electronic waste. In order to protect the environment, please do not dispose along with household waste. When the battery life ends, please recycle according to local administrative regulations. Please contact local waste administrative department for any questions.

#### Limited Two Year Warranty

Water Pik, Inc. warrants to the original consumer of this new product that it is free from defects in materials and workmanship for 2 years from the date of purchase. Consumer will be required to submit the original purchase receipt as proof of purchase date and if requested, the entire product, to support a warranty claim. Water Pik, Inc. will replace at its discretion the product, provided the product has not been abused, misused, altered or damaged after purchase, was used according to instructions, and was used only with accessories or consumable parts approved by Water Pik, Inc. This limited warranty excludes accessories or consumable parts such as tips, etc. Use with improper voltage will damage product and VOID warranty.

This warranty gives you specific legal rights. You may also have other rights that vary, depending on the law in your place of residence.

WATER PIK, INC. DISCLAIMS ALL OTHER EXPRESS OR IMPLIED WARRANTIES TO THE EXTENT PERMITTED BY LAW INCLUDING, BUT NOT LIMITED TO, ALL WARRANTIES OF MERCHANTABILITY AND FITNESS FOR A PARTICULAR PURPOSE. ALL IMPLIED WARRANTIES ARE LIMITED TO THE DURATION OF THIS LIMITED WARRANTY. SOME STATES OR PROVINCES MAY NOT ALLOW LIMITATIONS ON HOW LONG AN IMPLIED WARRANTY LASTS, SO THE ABOVE MAY NOT APPLY TO YOU.

## SAVE THESE INSTRUCTIONS

- Do not reach for this product if it has fallen into water. Unplug from electrical outlet immediately.
- Do not place or drop this product into water or other liquid.
- Check the charging cord and user supplied USB wall charger for damage before the first use and during the life of the product.

#### WARNING:

**To reduce the risk of burns, electrocution, fire, or injury to persons:**

- Use this product only as indicated in these instructions or as recommended by your dental professional.
- A user supplied USB-A wall charger (power adapter), safety certified (IPX4, Class II) and with a rated output of 5.0 VDC, 1.0 A Max must be used to charge this device.
- Do not plug this device into a voltage system that is different from the voltage system specified on the device or charger.
- Keep the charging cord and user supplied USB wall charger away from heated surfaces.

- Do not expose the appliance or battery to excessive temperatures.
- Unplug USB wall charger when not in use.
- If your physician advised you to receive antibiotic premedication before dental procedures, you should consult your dental professional before using this product or any other oral hygiene aid.
- Only use brush heads and accessories that are recommended by Water Pik, Inc.
- Do not use this product outdoors or operate where aerosol (spray) products are being used or where oxygen is being administered.
- Remove any oral jewelry prior to use of this product.
- Do not use if you have an open wound on your tongue or in your mouth.
- There are no consumer serviceable parts in this product and it does not require maintenance.

- This appliance is not intended for use by persons (including children) with reduced physical, sensory or mental capabilities, or lack of experience and knowledge, unless they have been given supervision or instruction concerning use of the appliance by a person responsible for their safety.
- Children should be supervised to ensure that they do not play with the appliance.
- If the supply cord is damaged, it must be replaced by a special cord or assembly available from the manufacturer or its service agent.
- Do not use this product if it has a damaged cord or plug, if it is not working properly, if it has been dropped or damaged, or dropped into any liquid. Contact Water Pik, Inc. at 1-800-525-2774 or visit [www.waterpik.com](http://www.waterpik.com).

#### BATTERY REMOVAL INSTRUCTIONS:

If you intend to dispose of the battery on your own, please follow these BATTERY REMOVAL INSTRUCTIONS to remove the **rechargeable lithium-ion battery**.

- 1 Run down the battery by operating the BRUSH button until the motor does not run.
- 2 Obtain a towel or cloth, hammer, flat-head screwdriver, and wire cutters.
- 3 Remove and discard the brush head. Cover the handle entirely with the towel or cloth.
- 4 Clamp the top of the handle against your work surface with one hand and strike the handle housing around the bottom perimeter on all sides to release the end cap latch. Continue striking and rotating the handle until the end cap releases.
- 5 Remove the internal components by turning the handle upside down, then un-latch the plastic tabs and slide the chassis from the outer housing.
- 6 The internal components should slide out when the handle is positioned upside-down. If this does not occur, repeat steps 5 and 6 until the components release.
- 7 Remove the battery from the chassis. Cut the battery wires one at a time with the wire cutters.
- 8 Recycle and dispose of the battery properly. The remaining product pieces should be discarded appropriately.

#### FOR USA ONLY

This device complies with part 15 of the FCC Rules. Operation is subject to the following two conditions: (1) This device may not cause harmful interference, and (2) this device must accept any interference received, including interference that may cause undesired operation.

Changes or modifications not expressly approved by Water Pik, Inc. could void the user's authority to operate the equipment.

**NOTE:** This equipment has been tested and found to comply with the limits for a Class B digital device, pursuant to part 15 of the FCC Rules. These limits are designed to provide reasonable protection against harmful interference in a residential installation. This equipment generates, uses and can radiate radio frequency energy and, if not installed and used in accordance with the instructions, may cause harmful interference to radio communications. However, there is no guarantee that interference will not occur in a particular installation. If this equipment does cause harmful interference to radio or television reception, which can be determined by turning the equipment off and on, the user is encouraged to try to correct the interference by one or more of the following measures:

SYMBOLS							
The following symbols may appear on your product and/or packaging. Some of these symbols may not be relevant in your region and are listed for information purposes only.							
Symbol	Definition	Symbol	Definition	Symbol	Definition	Symbol	Definition
	Refer to instruction manual		Detachable Power Supply		Do not use this device in a shower, bathtub and do not immerse in any liquid.		Regulatory Compliance Mark
	Manufacturer		Direct Current (DC) Voltage		Authorized Representative in the European Community		Separate collection for waste electrical and electronic equipment.
	Ingress Protection Code		Alternating Current (AC) Voltage		CE marking of conformity		
	IEC Class II Equipment		Do not immerse this device in any liquid.		UK Conformity Assessed		

Call: 1-800-525-2774  
Monday-Friday  
7 am - 5 pm MST  
Chat or E-mail  
[service@waterpik.com](mailto:service@waterpik.com)

#### CONNECT WITH US @WATERPIK



Call: 1-800-525-2774 (US) [www.waterpik.com](http://www.waterpik.com)

## waterpik

Water Pik, Inc.,  
a subsidiary of  
Church & Dwight Co., Inc.  
1730 East Prospect Road  
Fort Collins, CO 80553-0001 USA  
1-800-525-2774  
[www.waterpik.com](http://www.waterpik.com)

Designed and Tested in the USA. Made in China.  
Form No. 20031847-F-AB  
©2023 Water Pik, Inc.

- Reorient or relocate the receiving antenna.
- Increase the separation between the equipment and receiver.
- Connect the equipment into an outlet on a circuit different from that to which the receiver is connected.
- Consult the dealer or an experienced radio/TV technician for help.

#### Limitation of Liability

This limited warranty is your sole remedy against Water Pik, Inc. and it shall not be liable for any damages, whether direct, indirect, incidental, special, consequential, exemplary or otherwise, including but not limited to property damage, arising out of any theory of recovery, including statutory, contract or tort.

#### Arbitration

**BINDING ARBITRATION AND WAIVER OF RIGHT TO ASSERT MATTERS IN COURT AND RIGHT TO JURY TRIAL.**

By purchasing, installing, or using this product you agree that any controversy or claim arising out of or relating to your purchase, use, modification, installation, or removal of this product shall be settled by binding arbitration. The arbitrator's decision will be final and binding. Judgment on the award rendered by the arbitrator may be entered in any court having jurisdiction over the matter. Further, you agree that you will not have the right to litigate any claim arising out of or in relation to your purchase, use,

modification, installation, or removal of this product in any court or to have a jury trial on that claim.

Arbitration of any matters shall be administered by the American Arbitration Association and conducted by one arbitrator in accordance with the consumer arbitration rules of the American Arbitration Association in effect at the time of filing of the demand. The venue for all such arbitrations shall be Colorado and any such arbitration shall be subject to the Federal Arbitration Act and Colorado law.

**WAIVER OF RIGHT TO PARTICIPATE IN CLASS ACTIONS OR PURSUE CLAIMS IN A REPRESENTATIVE CAPACITY.**

Further, by purchasing, installing, or using this product you agree that arbitration must be on an individual basis. This means neither you, nor we, may join or consolidate claims in arbitration by or against other purchasers or users of Water Pik, Inc. products or the general public.

Additionally, you may not litigate in court or arbitrate any claims as a representative or member of a class or in a purported representative capacity on behalf of the general public, other purchasers or users of this product, other persons or entities similarly situated, or in a private attorney general capacity.

## waterpik

### Congratulations!

You are now on your way to better oral health!

#### WE'RE HERE TO HELP

We hope you are loving your new Toothbrush. If for any reason you are not satisfied or have any product questions, please contact our fast and friendly Customer Service Team based in Fort Collins, Colorado.



Call: 1-800-525-2774  
Monday-Friday  
7 am - 5 pm MST

Chat or E-mail  
[service@waterpik.com](mailto:service@waterpik.com)

INSTRUCTION MANUAL INSIDE  
FLIP OVER FOR QUICK START GUIDE