

Register and Save!

Save over \$50!

Register at [Waterpik.com/Registration](https://www.waterpik.com/Registration) to receive exclusive discount code.

We'd Love to Hear from You!

Connect with Us
@Waterpik



Call: 1-800-525-2774
www.waterpik.com

Waterpik® 14 Day Challenge App

Make water flossing a habit! Try our new mobile App for the best water flossing experience.



waterpik® WHITENING
waterflosser®

Congratulations!

You are now on your way
to better oral health!

- ✓ **Register and Save**
Register your product at [waterpik.com/registration](https://www.waterpik.com/registration) to receive over **\$50** in savings.
- ✓ **Write a Review**
Creating innovative Waterpik® products that inspire better oral health is our passion. We invite you to leave a review by sharing your thoughts on the Waterpik® Whitening Water Flosser on [waterpik.com](https://www.waterpik.com) or the retailer's website.
- ✓ **We're Here to Help**
We hope you are loving your new Waterpik® Whitening Water Flosser. If for any reason you are not satisfied or have any product questions, please contact our fast and friendly Customer Service Team based in Fort Collins, Colorado. Waterpik® Whitening Water Flosser is backed by a 3-year manufacturer's warranty.

Call: 1-800-525-2774
Monday-Friday
7 am - 5 pm MST



Chat or E-mail
service@waterpik.com



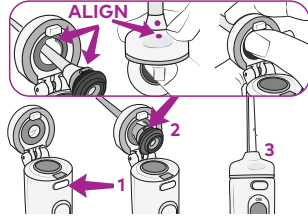
**Quick Start
Guide Inside!**



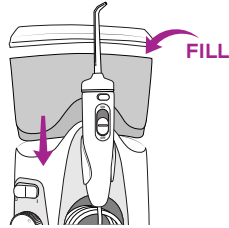
Quick Start Guide

PRIMING UNIT (FIRST TIME USE ONLY)

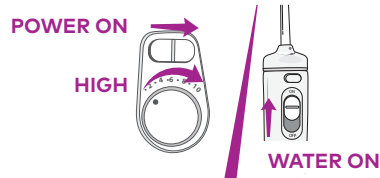
- 1 Press button to open flip top.¹
Insert tip through top, align notches on tip and handle (dots on tip and flip top will align), press firmly to click tip into place.²
Close flip top.³



- 2 Fill reservoir with warm water and replace it firmly on the base.



- 3 Turn pressure to high, point tip into sink, turn power and water switches ON until water flows. Turn power and water OFF.



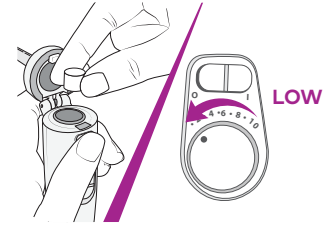
NEED HELP?

Visit [Waterpik.com/WelcomeWH](https://www.waterpik.com/WelcomeWH)
To watch a How To Video and find additional product support

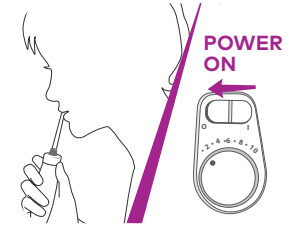
Call Us! 1-800-525-2774

WATER FLOSS

- 4 Load tablet into handle. Start on low pressure and increase to your liking.



- 5 With water switch in OFF position, place tip in mouth. Turn power ON.



- 6 Close lips enough to prevent splashing. Lean over sink. Turn water switch to ON position.

TO AVOID MESS: KEEP TIP IN MOUTH WHILE UNIT IS ON.



- 7 Aim water at the gumline at a 90 degree angle. Follow the gumline and pause briefly between teeth.

