

waterpik

Instruction Manual Manuel d'instructions Manual de instrucciones

Model # is located by barcode.

Please write your model # on your sales receipt or below.

Le numéro de modèle se trouve à côté du code-barres.

Veuillez inscrire le numéro de modèle sur votre reçu de vente ou ci-dessous.

El número de modelo está ubicado al lado del código de barras.

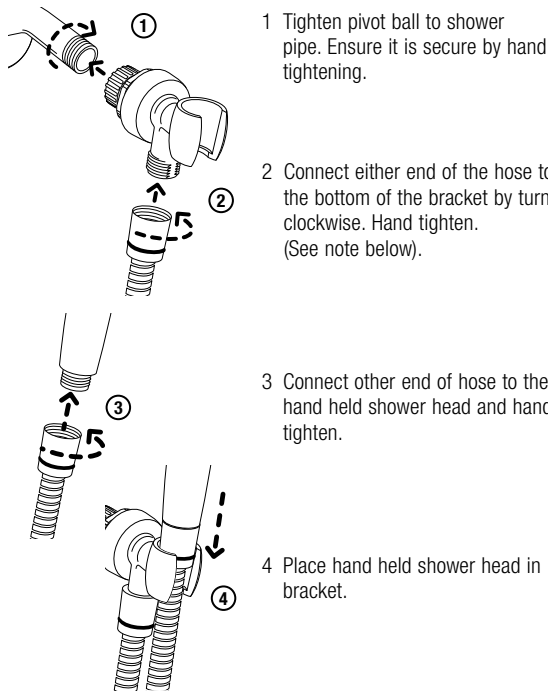
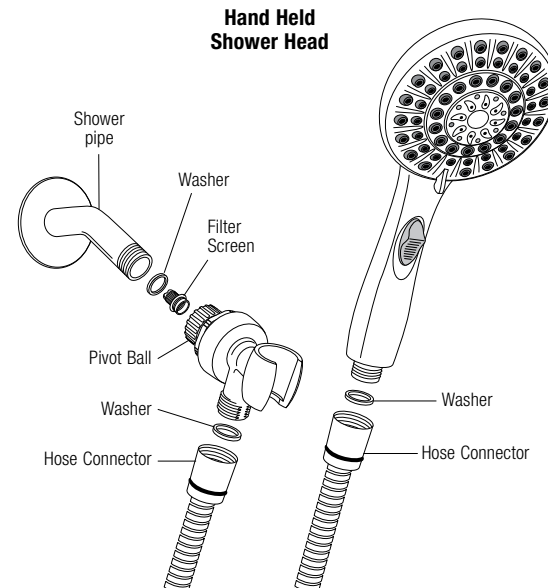
Sírvase escribir el número de modelo en el recibo de compra o debajo.

Model Number:

www.waterpik.com/shower-register

FN 20022245-F AD

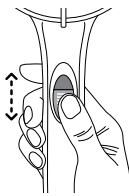
INSTALLATION



SPECIAL FEATURES

Pause in Handle:

The pause in handle feature allows you to control water flow from full power to a water saving trickle making it easier to bathe your child. The pause control is located on the handle.



Note: This pause button will not shut off water flow completely. A small amount of continuous water flow is necessary to meet plumbing code requirements. The ASME A112.18.1 standard is the official regulation used by the U.S. Dept. of Energy and plumbing code and states that a flow control device shall not completely shut off the flow of water downstream of the primary shut-off valve when fitted to, or integral with, a shower head or hand held shower.

WARNINGS:

- To avoid hot water dangers and conserve even more energy, make sure your water heater is set at 120°F (48.9°C) or below.
- Test the tub/shower water with your hand before bathing.
- For additional safety for Ecoflow® or high efficiency shower heads, it is recommended that all homes have installed a pressure balance tub and shower valve with the rotational limit stops properly set by a plumber. If you are unsure of your valve type consult your plumber.

LIFETIME LIMITED WARRANTY

Save your receipt as proof of purchase is required for warranty action. Water Pik, Inc. warrants to the original purchaser of this product that it is free from defects in material and workmanship for as long as the original purchaser owns this product. Water Pik, Inc. will replace the product which in our opinion is defective, provided that the product has not been abused, misused, altered or damaged after purchase. (This includes damage due to use of tools or harsh chemicals.) In the event an item has been discontinued we will replace with what we deem to be the closest product. Water Pik, Inc. is not responsible for labor charges, installation, or other consequential cost. The responsibility of Water Pik, Inc. shall not exceed the original purchase price of the product. This warranty gives you specific legal rights. You may also have other rights that vary where you reside.

Water Pik disclaims all other express or implied warranties to the extent permitted by law including, but not limited to, all warranties of merchantability and fitness for a particular purpose. All implied warranties are limited to the duration of this limited warranty. Some states or provinces may not allow limitation on how long an implied warranty lasts, so above may not apply to you.

Limitation of Liability: This limited warranty is your sole remedy against Water Pik and it shall not be liable for any damages, whether direct, indirect, incidental, special, consequential, exemplary or

otherwise, including but not limited to property damage, arising out of any theory of recovery, including statutory, contract or tort.

BINDING ARBITRATION AND WAIVER OF RIGHT TO ASSERT MATTERS IN COURT AND RIGHT TO JURY TRIAL

By purchasing, installing, or using this product you agree that any controversy or claim arising out of or relating to your purchase, use, modification, installation, or removal of this product shall be settled by binding arbitration. The arbitrator's decision will be final and binding. Judgment on the award rendered by the arbitrator may be entered in any court having jurisdiction over the matter. Further, you agree that you will not have the right to litigate any claim arising out of or in relation to your purchase, use, modification, installation, or removal of this product in any court or to have a jury trial on that claim.

Arbitration of any matters shall be administered by the American Arbitration Association and conducted by one arbitrator in accordance with the consumer arbitration rules of the American Arbitration Association in effect at the time of filing of the demand. The venue for all such arbitrations shall be Colorado and any such arbitration shall be subject to the Federal Arbitration Act and Colorado law.

WAIVER OF RIGHT TO PARTICIPATE IN CLASS ACTIONS OR PURSUE CLAIMS IN A REPRESENTATIVE CAPACITY.

Further, by purchasing, installing, or using this product you agree that arbitration must be on an individual basis. This means neither you, nor we, may join or consolidate claims in arbitration by or against

other purchasers or users of Waterpik® products or the general public. Additionally, you may not litigate in court or arbitrate any claims as a representative or member of a class or in a purported representative capacity on behalf of the general public, other purchasers or users of this product, other persons or entities similarly situated, or in a private attorney general capacity.

If product malfunctions or becomes damaged, stop use immediately and contact Water Pik, Inc. for assistance.

Have any questions or need assistance?

For quick service prior to calling have your model number and receipt ready.

In the U.S., call our toll-free Customer Assistance Line **1-800-525-2774**, Monday – Friday, 7:00 AM – 5:00 PM MST. English only. or visit www.waterpik.com

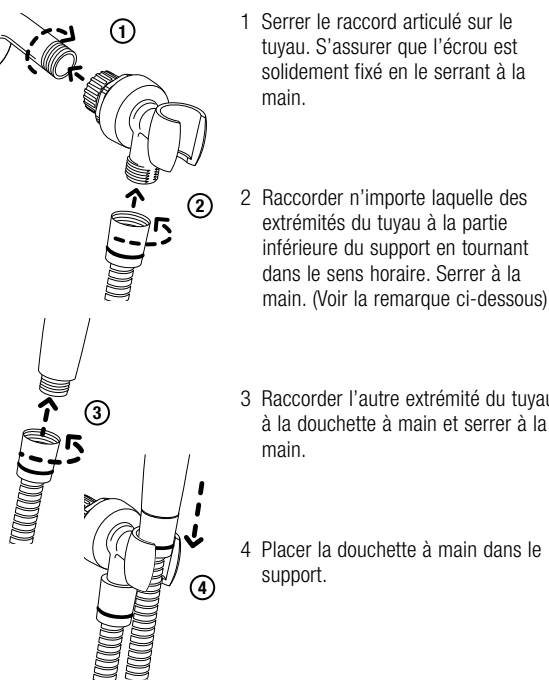
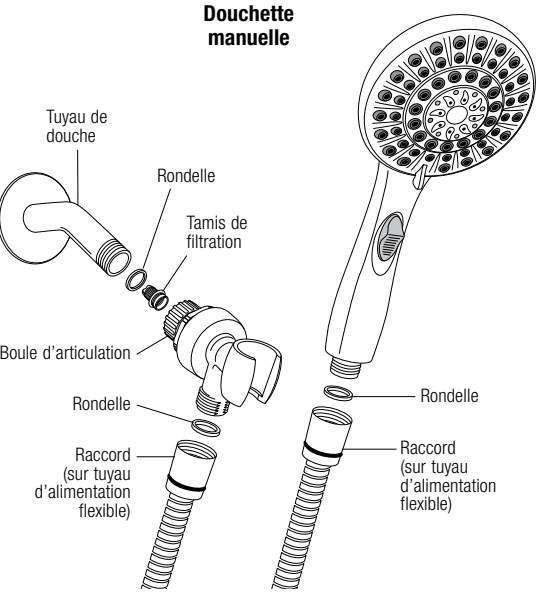
In Canada, call our billingual toll-free Customer Assistance Line **1-888-226-3042**, Monday – Friday, 7:00 AM – 5:00 PM MST. or visit www.waterpik.ca

© 2020 Water Pik, Inc. Printed in China.

waterpik

Water Pik, Inc., a subsidiary of Church & Dwight Co., Inc.
1730 East Prospect Road
Fort Collins, CO 80553-0001 U.S.A.
www.waterpik.com

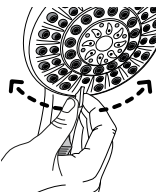
INSTALLATION



UTILISATION DU PRODUIT

Sélecteur du mode d'aspersion :

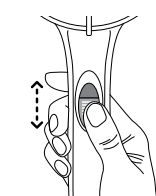
Le sélecteur du mode d'aspersion vous permet de choisir parmi divers réglages d'aspersion. Le réglage d'aspersion est contrôlé par le petit levier rotatif (à gauche et à droite). Tourner la rondelle de garniture sur l'avant de la douchette pour modifier les réglages.



CARACTÉRISTIQUES UNIQUES

Fonction de pause intégrée à la poignée :

La fonction de pause intégrée à la poignée vous permet de contrôler le débit d'eau d'une puissance maximale à un filet d'eau économique; il sera plus facile pour vous de donner le bain à votre enfant. La commande de pause se trouve sur la poignée.



Remarque : Le bouton de pause n'interrompt pas complètement le débit d'eau. Un débit réduit d'eau doit s'écouler continuellement afin de respecter les codes de plomberie. La norme ASME A112.18.1 est la règle officielle adoptée par le Département de l'Énergie des États-Unis et le code de la plomberie. Cette norme

indique qu'un dispositif de contrôle du débit ne doit pas interrompre complètement le débit d'eau en amont du robinet d'arrêt primaire lorsqu'il est installé sur ou déjà incorporé à une pomme de douche ou une douchette manuelle.

AVERTISSEMENTS :

- Afin de conserver encore davantage d'énergie et d'éviter les dangers liés à une eau trop chaude, s'assurer que votre chauffe-eau soit réglé à une température maximale de 120°F (48,9°C).
- Tester la température de l'eau de la baignoire/douche avec la main avant de se baigner.
- Pour plus de sécurité, l'installation (dans n'importe quel domicile) d'un mitigeur à équilibrage des pressions (pour baignoire/douche) avec butées de limitation de rotation adéquatement réglées par un plombier est recommandée pour les douchettes Ecoflow® ou les douchettes à haute efficacité. Si vous avez un doute sur votre type de mitigeur, consultez votre plombier.
- À usage externe uniquement.** L'amibe *Naegleria fowleri* potentiellement mortelle, peut être présente dans certaines eaux du robinet ou eaux de puits non chlorées.
- Toujours s'assurer que la douchette à main est correctement installée sur son support, pour empêcher la douchette de tomber.
- Ne pas tirer sur le tuyau flexible. Cela pourrait déloger la douchette de son support et la faire tomber.

ENGLISH

Thank you for purchasing this Waterpik® shower head. This booklet provides information to make installation easy and quick. You are minutes away from enjoying a powerful and invigorating shower experience with your new Waterpik® shower head.

You can view more information about Waterpik® shower head products at www.waterpik.com. To learn more about Waterpik® water for wellness® benefits go to www.waterpikwellness.com.

Note: Pictures shown may not directly match your shower head.

Includes an extra long 8-foot hose, perfect for an extended reach to bathe your children. The pause-in-handle feature is also great for bathing kids or pets as it reduces your shower spray to a trickle.

PRIOR TO INSTALLATION

- Remove old shower head and remove all pipe tape.
- Ensure that the washer from the old shower is not connected to the shower pipe. Use a thin utensil to check inside the shower pipe for washers, such as a pencil or screw driver. **Do not use your fingers.**
- Gather the tools necessary to install your new shower head.



Vacuum Breaker Backflow Prevention

Note: Several U.S. state and local municipal plumbing codes require the use of a backflow prevention device when installing a hand shower. This device is termed a vacuum breaker. If your hand shower includes a vacuum breaker it will be located in the hose, and the hose end with the vacuum breaker will include a sticker that reads "attach this vacuum breaker end to shower bracket." If the hose is not installed in this manner, water will not flow. If your hand shower does not include a vacuum breaker, and you would like to obtain one free of charge, please contact us at **1-800-525-2774** (U.S. calls only) and request part number 20009558.

OPERATION

Spray Selector:

Spray Selector allows you to select from various spray patterns. Spray pattern is controlled by the small lever that rotates left and right. Rotate the trim ring around the face of the shower head to change settings.



TROUBLESHOOTING GUIDE

Problem	Solution
No water flow from installed shower head.	a Confirm previous shower washer is not in the shower pipe. b Confirm there is only one washer in the pivot ball.
Low water pressure or missing spray patterns.	a Clean shower head in vinegar/water solution. (See care & cleaning section). b Clean filter screen.
Leaking at pipe/pivot ball connection.	a Confirm only one washer is seated on top of the screen. b Grate bar of soap across the shower pipe threads to act as a sealant. c Make sure all pipe tape is removed from shower pipe. Please refer back to installation instructions for pipe tape.
Bracket is too stiff to change angle.	a Loosen pivot ball (contact Water Pik for further instructions).

ENTRETIEN ET NETTOYAGE

- Pour le maintien du bon fonctionnement de système, on doit éliminer les dépôts minéraux dès qu'ils apparaissent dans les orifices d'aspersion. Pour l'élimination des dépôts minéraux, frotter délicatement les busettes en caoutchouc sur la face de la douchette pour expulser les dépôts minéraux.
- Pour un nettoyage plus approfondi, démonter la douchette et placer celle-ci pendant 2 à 3 heures dans un récipient de vinaigre blanc (utiliser uniquement du vinaigre blanc – 250 à 500 mL). Réinstaller ensuite la douchette et ouvrir l'arrivée d'eau – laisser l'eau couler à chaque mode d'aspersion pendant 1 à 2 minutes pour éliminer tout résidu de vinaigre. Repeat as necessary.
- Ne pas nettoyer ou rincer de pièces de l'appareil avec des produits chimiques puissants, nettoyants puissants ou produits abrasifs; cela peut endommager les pièces ou le revêtement et entraînera l'annulation de la garantie.**
- Nettoyer le tamis de filtration : dévisser la boule d'articulation et effectuer un nettoyage sous pression pour éliminer les particules qui s'y trouvent. Suivre les étapes 1 à 4 dans la section d'installation pour réinstaller la douchette en s'assurant que la rondelle a bien été réinstallée au sommet du tamis de filtration.

